

CHARMILL

RESIDENTIAL

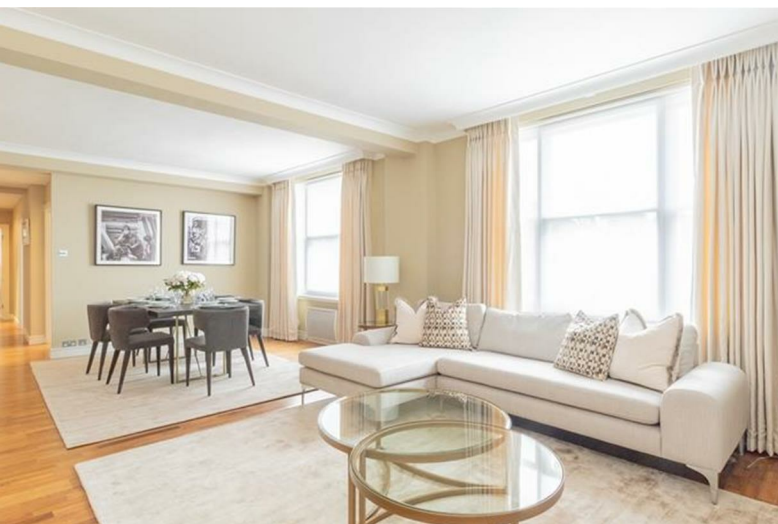


Hill Street, Mayfair W1

£1,680



Hill Street



Description

This beautifully maintained three bedroom apartment spans over 1122 sq ft comprising a large reception room, separate fully-fitted kitchen with ample storage, large double bedroom with en-suite shower room, two further double bedrooms and modern family bathroom. This beautiful purpose built building benefits from lift service, video entry, on-site building manager as well as access to a private gated communal garden.

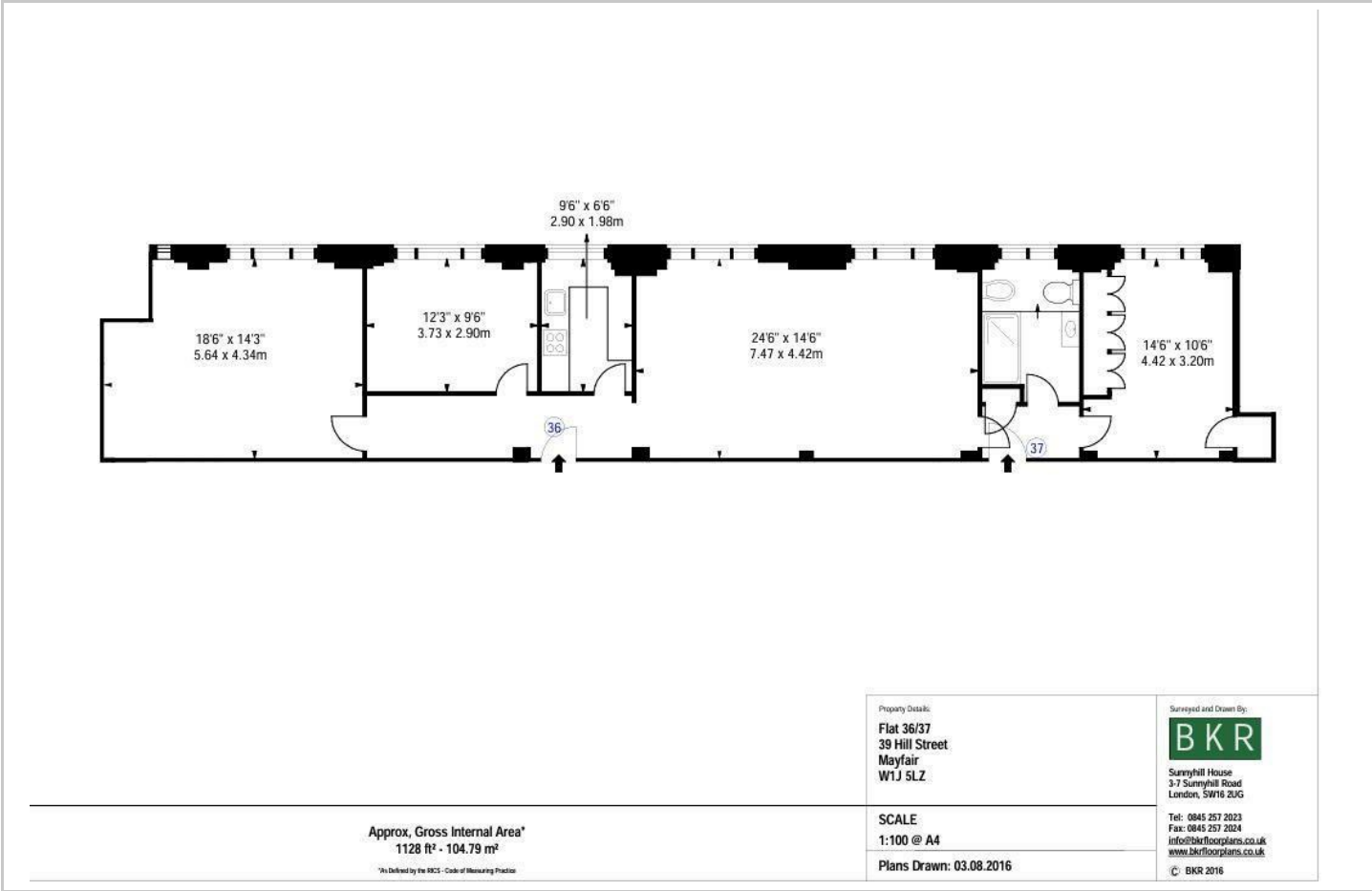
The apartment provides great transport links including Green Park (Jubilee, Piccadilly & Victoria lines), Bond Street (Jubilee & Central line) and Marble Arch (Central line) stations - all within a short stroll away.

- On site building manager
- Lift service
- Pet friendly
- Video entry
- Private gated communal garden
- Flexible rental terms
- Available on a furnished or unfurnished basis

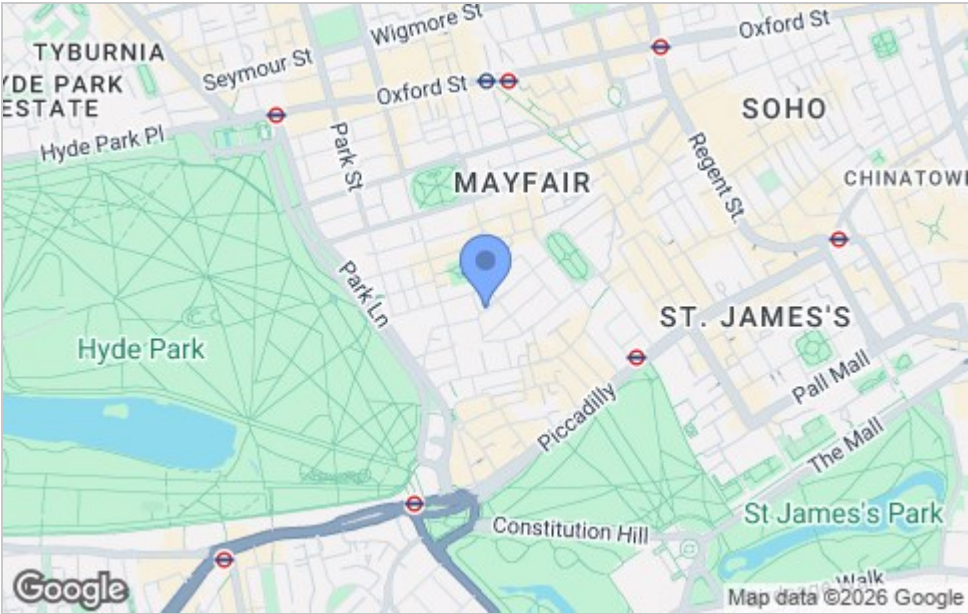




Floor Plan



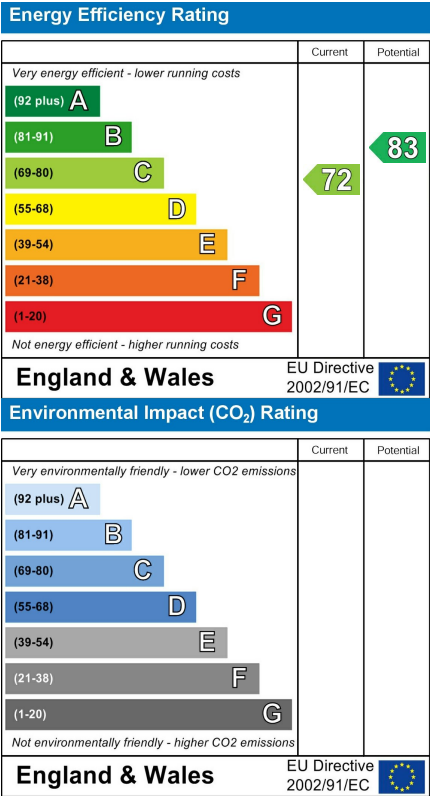
Area Map



Viewing

Please contact us on 020 7046 6275 if you wish to arrange a viewing appointment for this property or require further information.

Energy Efficiency Graph



These particulars, whilst believed to be accurate are set out as a general outline only for guidance and do not constitute any part of an offer or contract. Intending purchasers should not rely on them as statements of representation of fact, but must satisfy themselves by inspection or otherwise as to their accuracy. No person in this firm's employment has the authority to make or give any representation or warranty in respect of the property.

020 7046 6275 • sales@charmillresidential.co.uk • 51 Maida Vale, Little Venice, London W9 1SD
charmillresidential.co.uk